



Duchess Walk, London  
SE1

GARTON JONES.COM



# Duchess Walk, London , SE1

GARTON JONES.COM

9 Albert  
Embankment  
London  
SE1 7SP

Sales +44 (0) 20 7735 1888  
nineelms@gartonjones.com  
www.gartonjones.com

## £645,000 Leasehold

This stylish one-bedroom apartment (approx. 538sq.ft / 50sq.m) occupies the seventh floor of Tudor House, an iconic development on the banks of the River Thames. Situated within the esteemed One Tower Bridge, the apartment boasts a quiet aspect overlooking the communal gardens and offers a haven of tranquillity in the heart of the city. Finished to exacting standards, the interior reflects the sophisticated design vision of Conran & Partners, incorporating state-of-the-art technology and contemporary finishes. The open-plan reception room seamlessly integrates a well-equipped kitchen, creating a spacious and inviting living area. A private balcony provides an ideal space for outdoor relaxation and enjoying the communal gardens.

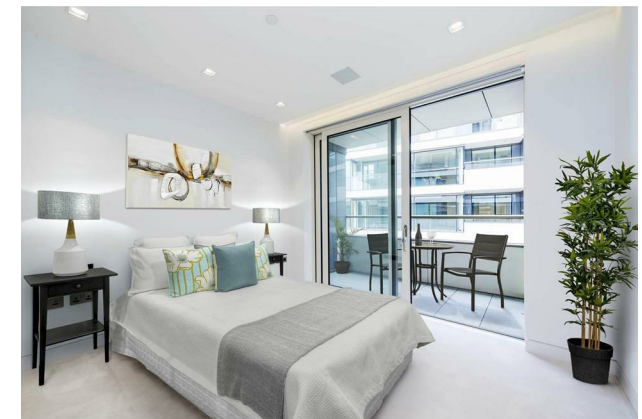
Further benefits include ample storage, including fitted wardrobes in the bedroom, and a luxurious bathroom suite. Residents of One Tower Bridge have access to a superb range of amenities, including a spa with a swimming pool, Jacuzzi, sauna, and steam room, as well as a well-equipped gymnasium.

Conveniently located moments from London Bridge, Tower Hill, and Tower Gateway stations, this exceptional apartment offers easy access to the City and beyond. A wealth of amenities, including renowned restaurants, vibrant bars, and cultural attractions, are within easy reach.

Please note some photos have been virtually staged and viewing is highly recommended.

Council Tax Band E (London Borough of Southwark)  
Leasehold: 986 Years Remaining  
Service Charges: £7,000 per annum (payable 6 monthly)  
Ground Rent: £988.36 per annum (payable 6 monthly)

- 1 Bedroom
- 538sq.ft (50sq.m)
- Bathroom
- Open Plan Reception & Modern Kitchen
- Balcony
- Views over Communal Gardens
- Residents Gym
- Swimming Pool & Spa Facilities
- 24 Hour Concierge
- Virtual Golf Room



EPC certificate available on request.

